



CERTIFICATE OF ANALYSIS

Delta Technologies

510 Church Street
Ridgefield, NJ 07657

(213) 219-4188

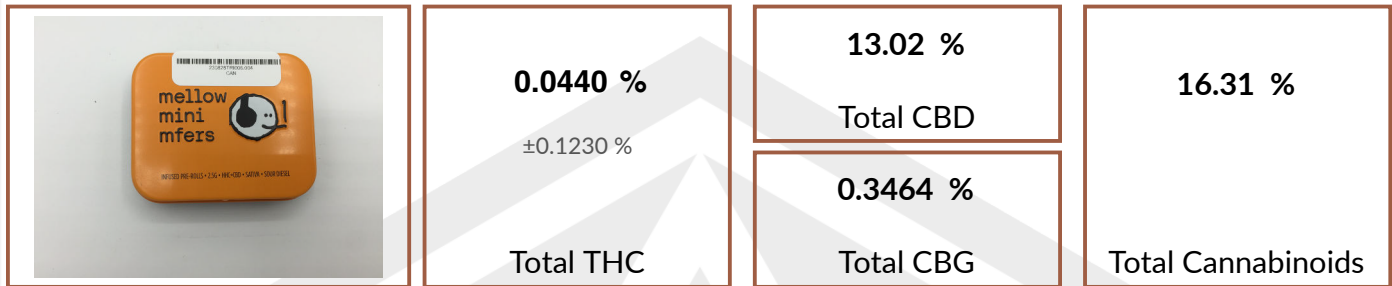
Sample: 230828TRI006.004

Sample Description: MFER Mini Mellow Pre-Roll

Sample Received: 08/28/2023; Report Created: 09/01/2023;
Sampled By: Client;

5E

Plant, Preroll



Cannabinoids

Date Analyzed: 08/30/2023

Complete

Analyte	LOD %	LOQ %	Result %	Result mg/g
THCa	0.005671	0.01890	0.0031	0.031
Δ9-THC	0.005671	0.01890	0.0027	0.027
Δ8-THC	0.005671	0.01890	<LOQ	<LOQ
THCVa	0.005671	0.01890	ND	ND
THCV	0.005671	0.01890	0.6561	6.561
CBDa	0.005671	0.01890	8.303	83.03
CBD	0.005671	0.01890	5.743	57.43
CBDVa	0.005671	0.01890	0.04671	0.4671
CBDV	0.005671	0.01890	0.02780	0.2780
CBN	0.005671	0.01890	0.04761	0.4761
CBGa	0.005671	0.01890	0.2631	2.631
CBG	0.005671	0.01890	0.1154	1.154
CBCa	0.01101	0.03671	0.2049	2.049
CBC	0.005671	0.01890	ND	ND
CBL	0.005671	0.01890	ND	ND
Total			16.31	163.1

SOP.102, AOAC 2018.11 (Modified); UHPLC-PDA. Total THC = THCa * 0.877 + Δ9-THC; Total CBD = CBDa * 0.877 + CBD; Total CBG = CBGa * 0.878 + CBG. Pass/Fail THC criteria, if listed, is in accordance with 86 FR 5596 issued by the USDA for pre-harvest hemp clearance (total TH - uncertainty ≤ 0.3% THC). Dry weight percent of cannabinoids, if listed, is calculated using the dried weight determined by the moisture content prior to extraction, indicated as follows (SOP.702; Gravimetry).

TRI-
CHOME
ANALY-
TI-CAL

6000 Commerce Parkway Suite I
Mount Laurel, NJ
(856) 316-0600
http://www.trichomeanalytical.com
Lic# ISO/IEC 17025:2017 A2LA CERT# 5913.01 // DEA# RT0581098 // NJ AU# TL000001


Kristen Goedde
Lab Manager


Tom Barkley
Technical Manager

Confident Cannabis
All Rights Reserved
support@confidentcannabis.com
(866) 506-5866
www.confidentcannabis.com



ND=Not Detected, NR=Not Reported, LOD=Limit of Detection, LOQ=Limit of Quantitation. Action levels reported for contaminants are in accordance with 10 NYCRR §1005 issued by the New York Cannabinoid Hemp Program. Values reported relate only to the product tested and batched under the batch number identified above. Trichome Analytical makes no claims as to the efficacy, safety, or other risks associated with any detected or non-detected level of any compounds reported herein. All analytical work is performed using validated methods and in accordance with state and/or federal guidelines. This certificate may only be reproduced in full.



CERTIFICATE OF ANALYSIS

Delta Technologies

510 Church Street
Ridgefield, NJ 07657

(213) 219-4188

Sample: 230828TRI006.004

Sample Description: MFER Mini Mellow Pre-Roll

Sample Received: 08/28/2023; Report Created: 09/01/2023;
Sampled By: Client;

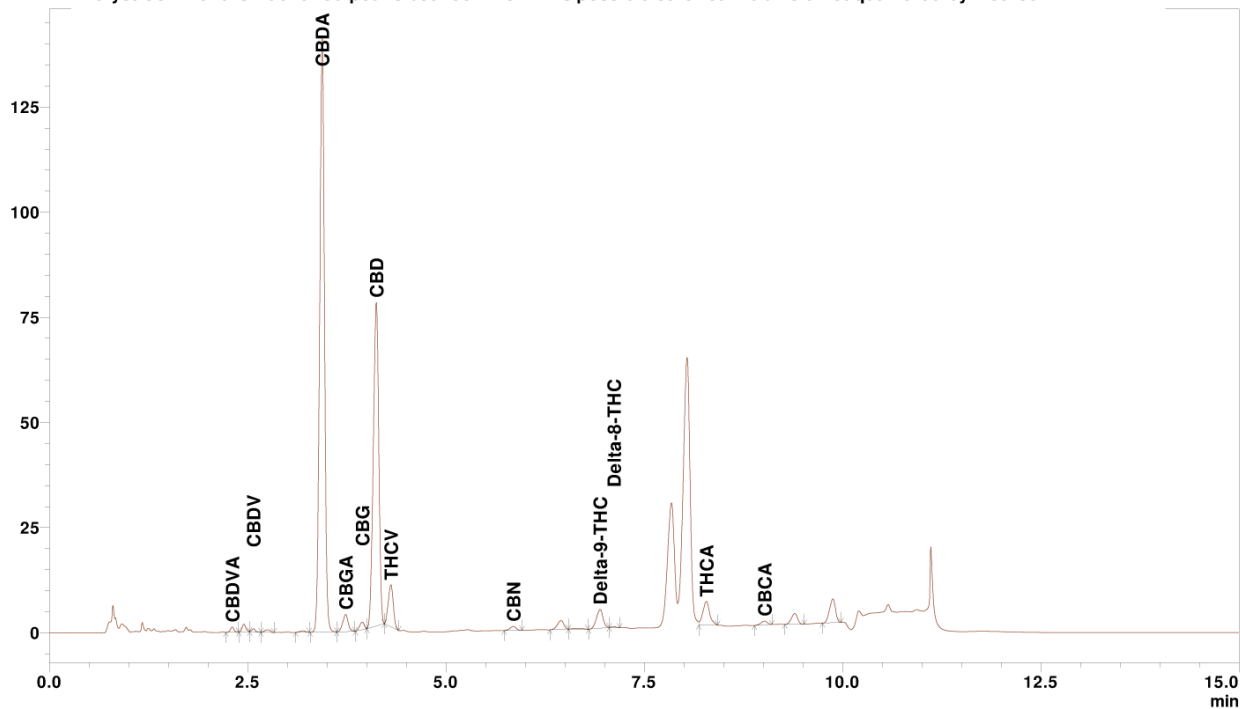
5E

Plant, Preroll

Cannabinoids Supporting Information
Full Chromatogram
Method: UHPLC-PDA SOP.102
Sample Filename: 230828TRI006.004_024.lcd

**TRI—
CHOME
ANALY—
TI—CAL**

Analyst Comment: Unidentified peaks between 7-8 min is possible other cannabinoid not quantified by method.



**TRI—
CHOME
ANALY—
TI—CAL**

6000 Commerce Parkway Suite I
Mount Laurel, NJ
(856) 316-0600
<http://www.trichomeanalytical.com>
Lic# ISO/IEC 17025:2017 A2LA CERT# 5913.01 // DEA# RT0581098 // NJ AU# TL000001

Kristen Goedde
Lab Manager

Tom Barkley
Technical Manager

Confident Cannabis
All Rights Reserved
support@confidentcannabis.com
(866) 506-5866
www.confidentcannabis.com



ND=Not Detected, NR=Not Reported, LOD=Limit of Detection, LOQ=Limit of Quantitation. Action levels reported for contaminants are in accordance with 10 NYCRR §1005 issued by the New York Cannabinoid Hemp Program. Values reported relate only to the product tested and batched under the batch number identified above. Trichome Analytical makes no claims as to the efficacy, safety, or other risks associated with any detected or non-detected level of any compounds reported herein. All analytical work is performed using validated methods and in accordance with state and/or federal guidelines. This certificate may only be reproduced in full.